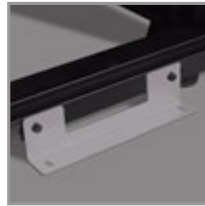




45U SmartRack Mid-Depth Rack Enclosure Cabinet with doors & side panels

MODEL NUMBER: SR45UBMD



Description

The SR45UBMD is part of our new line of mid-depth rack enclosures. It features a massive front-to rear-ventilation capacity that meets or exceeds server manufacturer requirements. Its integrated baying tabs make it easy to combine multiple enclosures in rows for data center applications. This enclosure is also compatible with hot-aisle/cold-aisle configurations.

The SR45UBMD houses 3000 lb of standard 19-inch rack equipment in 45U. Its front and rear pairs of vertical rails have square mounting holes that are adjustable in quarter-inch increments from 4 to 31 inches. Adjustment is quick and an easy-view depth index ensures consistent rail placement without requiring time-consuming measurements. Each rack space within the enclosure is numbered for ready reference.

Two of the adjustable vertical mounting rails support toolless button-mount 0U installation of up to four compatible PDUs and cable managers. This feature makes it easier to route cabling to rack equipment and reduces cord clutter.

With its locking, reversible, removable front and rear doors, and locking, removable side panels, the SR45UBMD provides ultimate equipment safety. The side panels are half size for ease of removal and reinstallation. The split rear door design allows the enclosure to be placed closer to a wall. The SR45UBMD meets all requirements toward PCI DSS compliance.

The top panel of the SR45UBMD is vented to help remove warm air from the enclosure and draw in cool air by convection. The top panel includes ports for cable routing, and can be quickly removed without tools. To facilitate cable access, the SR45UBMD is open-bottom.

All components of the SR45UBMD are grounded to the enclosure frame. Front and rear threaded

Highlights

- 45U SmartRack enclosure with doors and side panels
- 36" (927mm) depth (with mounting depth increments from 4 to 31") and standard 24" (600mm) width
- 4 interior vertical posts with unthreaded square hole openings
- Ships fully assembled
- Massive front to rear ventilation capacity
- 3000 lb stationary / 2250 lb rolling load capacity
- Locking, removable, reversible front and rear doors
- Locking, removable side panels keyed alike with doors
- Pre-installed casters and leveling feet
- Includes 50 pieces of M6 cage nuts and 50 pieces of M6 screws (equipment mounting hardware)
- Meets all enclosure requirements towards PCI DSS (Payment Card Industry Data Security Standard) Compliance

Package Includes

- SR45UBMD Rack Enclosure
- (4) side panels
- (4) side panel locks
- (2) door & side panel keys
- (50) M6 screws
- (50) M6 washers
- (50) M6 cage nuts
- Owner's Manual



grounding points are provided for connection to the facility earth ground. The removable front and rear doors feature quick-release ground wires.

To simplify deployment, the SR45UBMD comes with preinstalled casters that enable it to be easily maneuvered into the desired location, where it can be secured by adjusting the preinstalled levelers. Note: the casters are intended for minor position adjustments and are not designed for moving the enclosure over long distances.

The SR45UBMD comes with a 5-year product warranty. As part of the SmartRack family, the SR45UBMD is compatible with Tripp Lite's extensive range of rackmount accessories, enabling you to customize your solution to meet any requirement.

Features

- Ships fully assembled for rapid deployment and rolls into place on pre-installed casters allowing the enclosure to be pre-configured and rolled to the final installation location - casters are removable
- Front and rear sets of equipment mounting rails adjust in 1/4" increments. Adjustment is quick and convenient. The easy-view depth index ensures consistent rail placement without requiring time-consuming measurements.
- Toolless accessory mounting rails (2 rails per enclosure) include slots for quick installation of compatible PDUs and vertical cable managers. Mounting slots are arranged in an industry-standard pattern compatible with a wide variety of accessories. Each rail can accommodate two vertical PDUs or cable managers side-by-side (four items per enclosure).
- Enclosure includes mounting hardware of 50 pieces of M6 cage nuts and 50 pieces of M6 screws
- Textured powder coat finish for tough resistance to environmental concerns such as deployment in warehouses.
- Massive front to rear ventilation capacity. 65+% open space in door perforation pattern meets or exceeds server manufacturer requirements.
- Maximum usable internal depth of 31 inches/78.75 cm (front to rear rail).
- Weight ratings of 3000 lb stationary and 2250 lb rolling.
- Front door is locking, reversible and removable.
- Rear doors are locking and reversible. Split rear door design reduces clearance requirements for service entry allowing the enclosure to be placed closer to a wall.
- Locking removable side panels are 'half size' to make them smaller and lighter improving ease of installation and servicing. Two side panels per side (4 panels total). Side panels are keyed alike to the front and rear doors.
- Built in latching tabs allow enclosures to be combined securely in rows. Center-to-center width can be set at 600mm or 24" to match standard data center floor tiles.
- Leveling feet extend to allow enclosure to be positioned on uneven floors. Levelers are removable.
- Convenient grounding system. All components are grounded to the enclosure frame which includes multiple connections for facility ground. Front and rear doors include quick-release ground wires.
- Open bottom for cable access.



- Top panel has generous cable access holes. Panel can be removed toollessly in seconds without having to disconnect cables first.
- Included stabilizing brackets are used for shipment and can be reattached at the bottom of the enclosure frame on the inside or outside of the rack.
- Meets all enclosure requirements towards PCI DSS (Payment Card Industry Data Security Standard) Compliance
- Compatibility with airflow optimization accessories as well as cable management accessories.

Specifications

OVERVIEW	
UPC Code	037332174475
Device Compatibility	Patch Panel; Network Switch; UPS
Rack Type	Enclosure
PHYSICAL	
Color	Black
Factory Preset Rack Depth (cm)	57.8
Factory Preset Rack Depth (in.)	22.75
Factory Preset Rack Depth (mm)	578
Maximum Device Depth (cm)	78.74
Maximum Device Depth (in.)	31
Maximum Device Depth (mm)	787
Minimum Device Depth (cm)	10.16
Minimum Device Depth (in.)	4
Minimum Device Depth (mm)	102
Rack Height	45U
Shipping Dimensions (hwd / cm)	213.36 x 66.04 x 101.60
Shipping Dimensions (hwd / in.)	84.00 x 26.00 x 40.00
Shipping Weight (kg)	151.95
Shipping Weight (lbs.)	335.00
Unit Dimensions (hwd / cm)	212.725 x 60.02 x 91.44
Unit Dimensions (hwd / in.)	83.75 x 23.63 x 36
Unit Weight (kg)	129.27
Unit Weight (lbs.)	285
Weight Capacity - Rolling (kg)	1,021



Weight Capacity - Rolling (lbs.)	2250
Weight Capacity - Stationary (kg)	1,361
Weight Capacity - Stationary (lbs.)	3000
Rack Depth	Mid
Number of Vertical Mounting Rails	4
SPECIAL FEATURES	
Grounding Lug	Front and back door frames
Built-in Cable Management	Yes
STANDARDS & COMPLIANCE	
Certifications	UL60950; RoHS; CE; IP20 Protection Rating
Approvals	EIA/ECA-310-E
WARRANTY	
Product Warranty Period (Worldwide)	5-year limited warranty

© 2020 Tripp Lite. All rights reserved. All product and company names are trademarks or registered trademarks of their respective holders. Use of them does not imply any affiliation with or endorsement by them. Tripp Lite has a policy of continuous improvement. Specifications are subject to change without notice. Tripp Lite uses primary and third-party agencies to test its products for compliance with standards. See a list of Tripp Lite's testing agencies:

[https:// products/product-certification-agencies](https://products/product-certification-agencies)